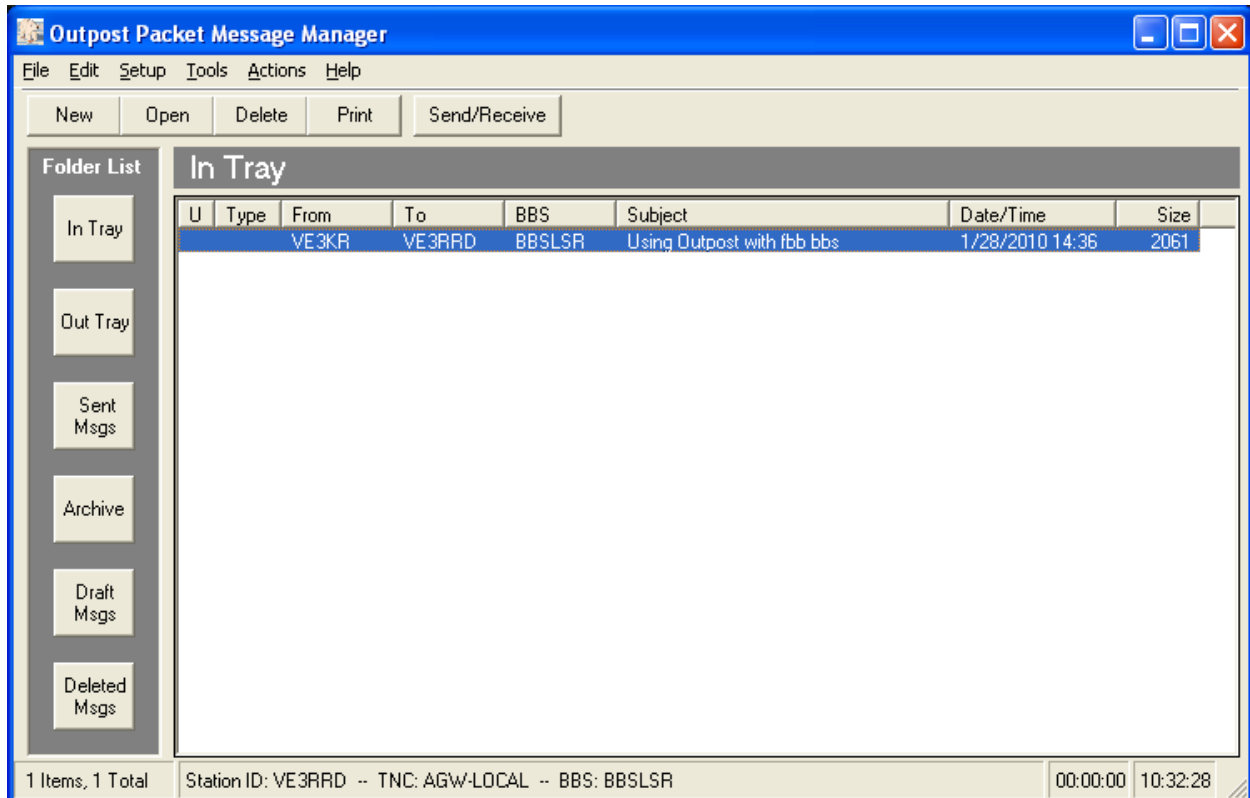
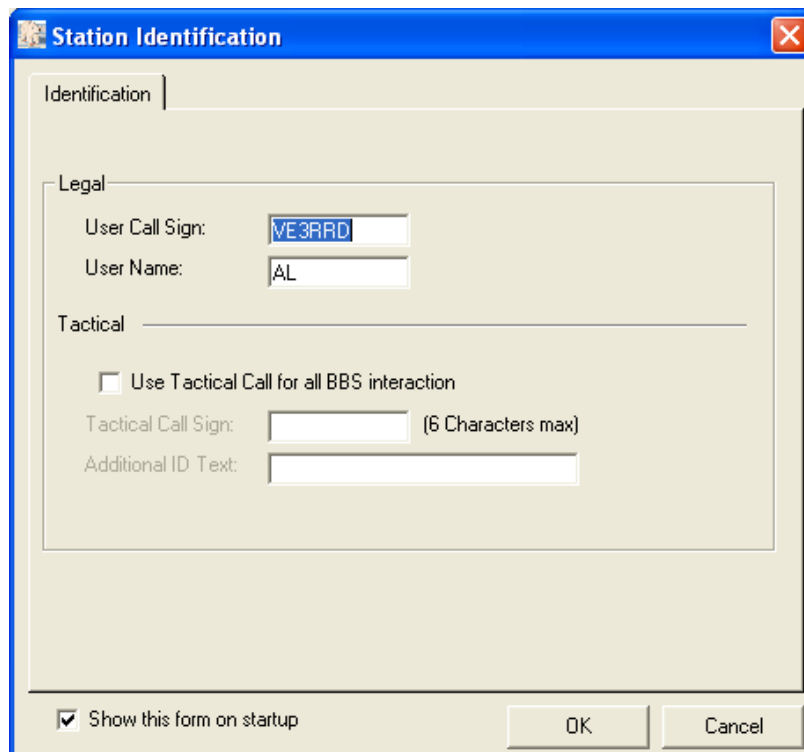


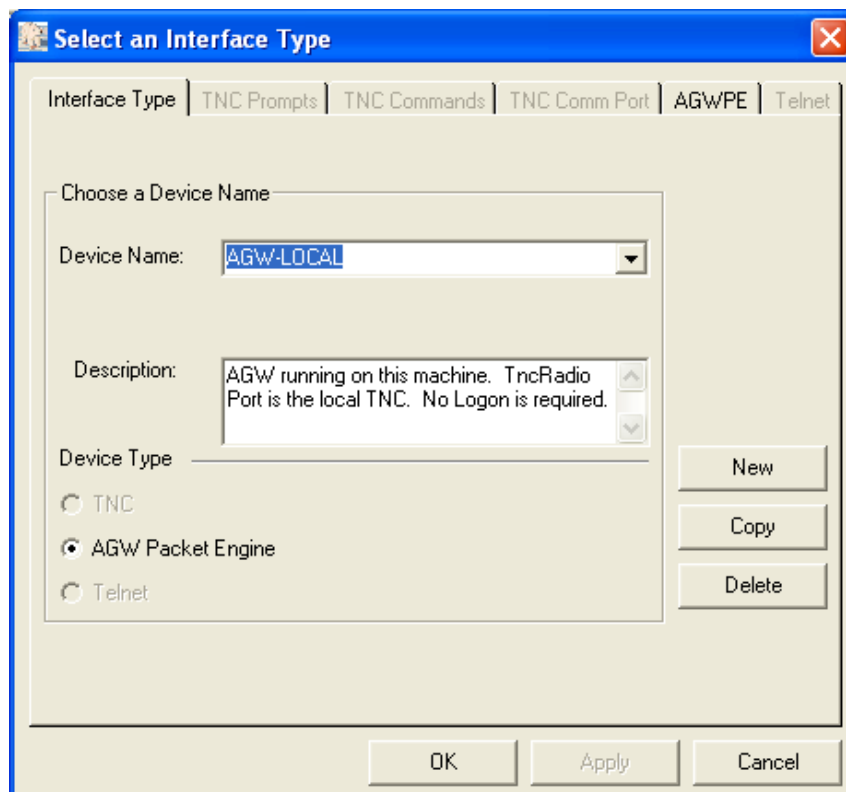
Outpost Setup for VE3LSR BBS Access via 145.070 or 145.710



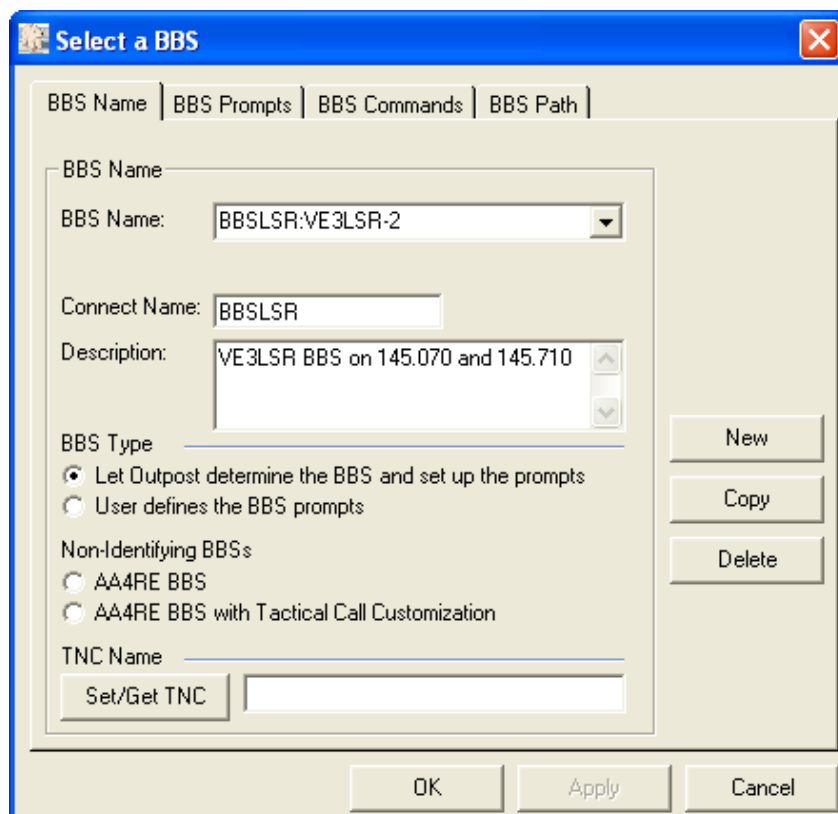
Main Outpost Screen for version 2.4.0 c81



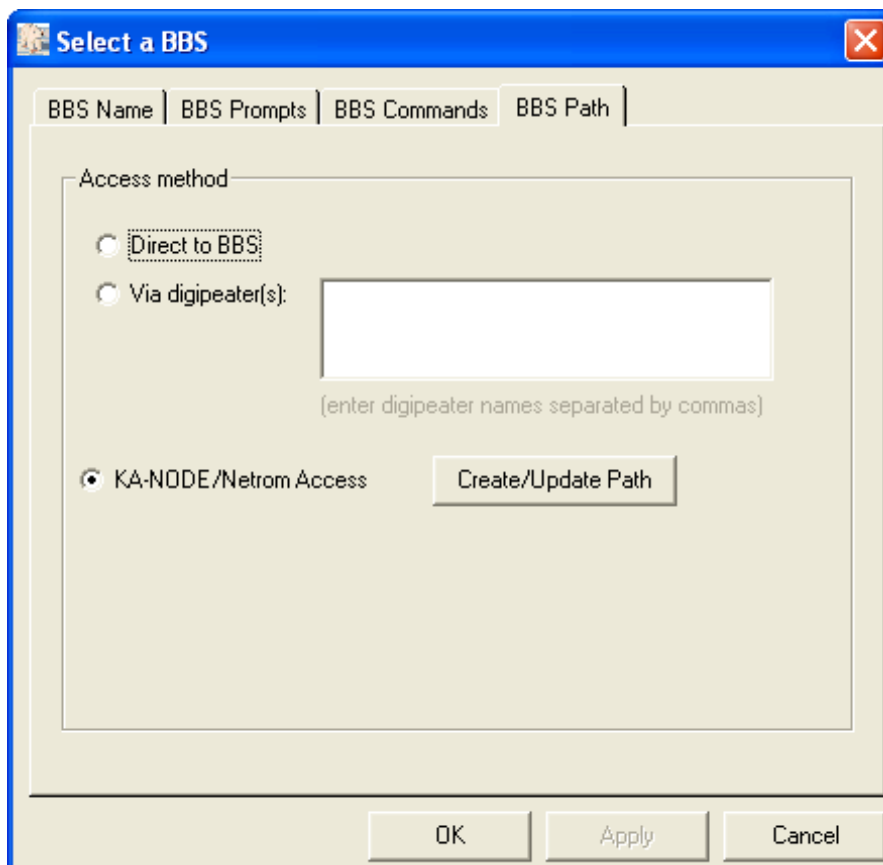
Enter your call and name and click OK



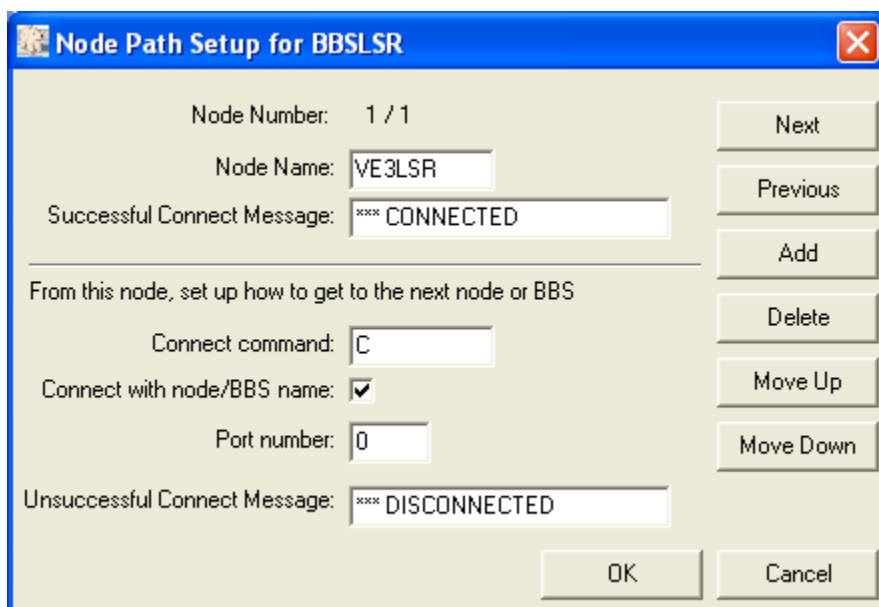
TNC Setup when using AGWPE (click "Apply" and OK after making selection)



BBS Name screen setup (click "New" before entering info, then click "Apply")



BBS Path screen setup (select KA-NODE, then click “Create/Update Path”)



Create/Update Path screen setup (enter data exactly as shown and click OK – there is a space between the *** and the words CONNECTED and DISCONNECTED)

You can download the latest version of Outpost from:
<http://www.outpostpm.org/>, click on “Downloads”

When installing, be sure to select “First time installation for new users” which will install all components of the program.

If you aren't registered on the VE3LSR BBS already, you will have to manually log in and configure your account. This can be done with any packet terminal program by sending the following:

```
C VE3LSR    (after receiving the Connected to VE3LSR message send)
C BBSLSR
```

The BBS software will ask for your name, city and postal code (first 3 digits). To change your connection profile so that Outpost can log in, make the following changes:

At the “>” prompt, type OP <enter> which will disable paging (showing 8 messages per page).

At the “>” prompt type X <enter> which will select Expert Mode.

Both functions can be toggled back to default by entering the commands again. To exit, type “bye”.

You can also manually log in using Outpost by selecting “Interactive Packet” under the “Tools” menu. After entering your call (when prompted), enter VE3LSR when prompted for the BBS Name. This will connect you to the VE3LSR node. To connect to the BBS, type C BBSLSR followed by <enter> in the comm window. This will connect you to the VE3LSR BBS so you can setup your account as described above.

Once the BBS and Outpost have been properly configured, it is only necessary to tune the radio to 145.070 MHz, run AGWPE if you are using it, run Outpost – then click on the Send/Receive button. Outpost will connect to the BBS, list/download your messages and when completed it will disconnect from the BBS.

<73 / VE3RRD – 28 Jan 2010>